

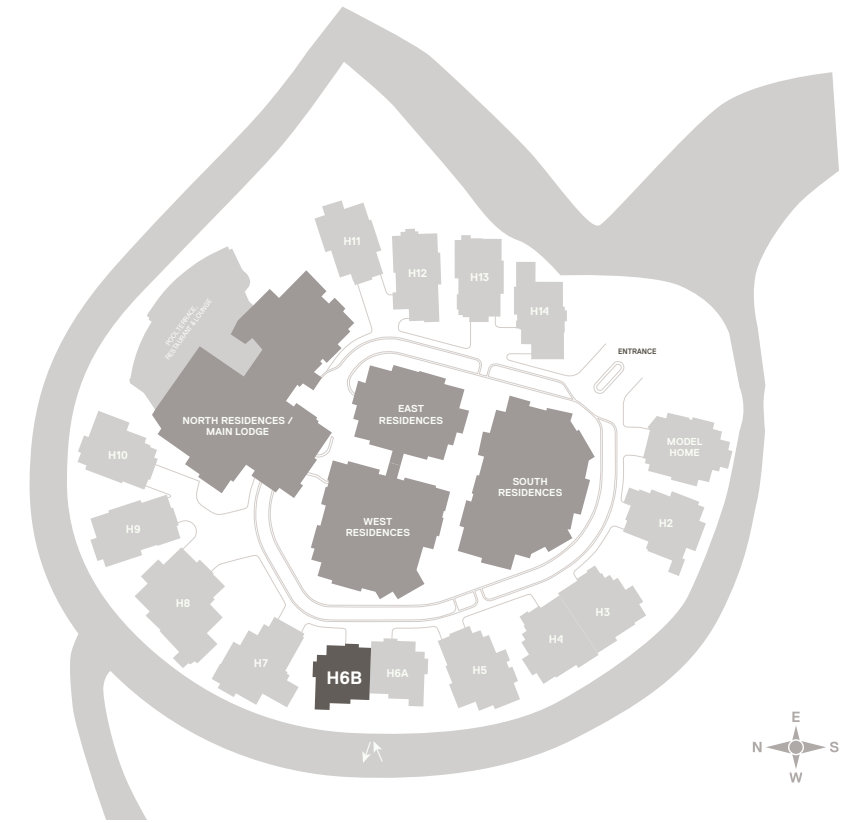
6

W

N

O

I



# HOME 6B

5,505 SQ FT | 3 LEVELS

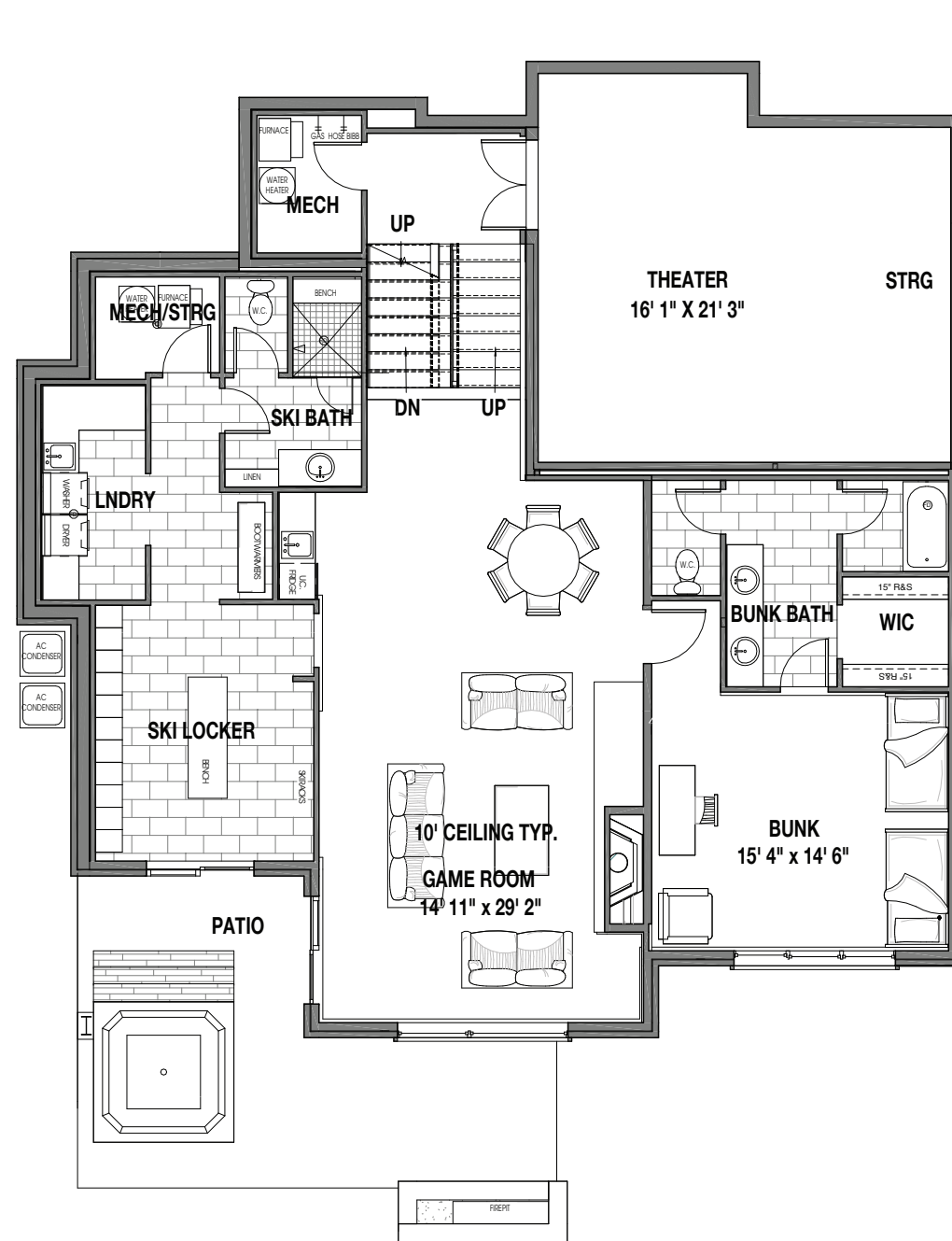


## FEATURES

- SKI-OUT/SKI-IN
- 5 BEDROOMS
- 6 BATHROOMS
- 1 POWDER ROOMS
- 2 CAR HEATED GARAGE
- EXPANSIVE VIEWS

## ARCHITECTURAL / INTERIOR HIGHLIGHTS

- Floor to Ceiling Dual Glazed Low-E High Performance Windows
- Wrap Around Windows in Great Room and Master Bedroom Suite with Open Views to Expansive Vistas
- Master Bedroom Suite with Steam Shower and Walk-In Closet
- Elegantly Appointed Bathrooms with Marble, Travertine, Limestone Or Quartz Finishes
- Laundry Rooms on Ski and Bedroom Levels
- Ceiling Heights Up to 15 Ft.
- Gourmet Kitchen with Custom Cabinetry, Pantry, Under Counter Refrigerator and Sub-Zero and Wolf Appliances
- Waterworks, Dornbracht, Hansgrohe or Blanco Fixtures Throughout
- Custom Built Natural Grain Wood and Steel Floating Staircases
- Custom Rift-Sawn White Oak Interior Doors
- Balconies with Custom Steel Railings and Large Terraces with Expansive Vistas
- Wood and Gas Burning Fire Places
- Ski Locker Room with Outdoor Spa and Fire Pits
- Game and/or Exercise Rooms
- Natural Stone and Reclaimed Wood Sidings
- Central Air Conditioning and Heat Throughout
- Radiant Heat Flooring Throughout

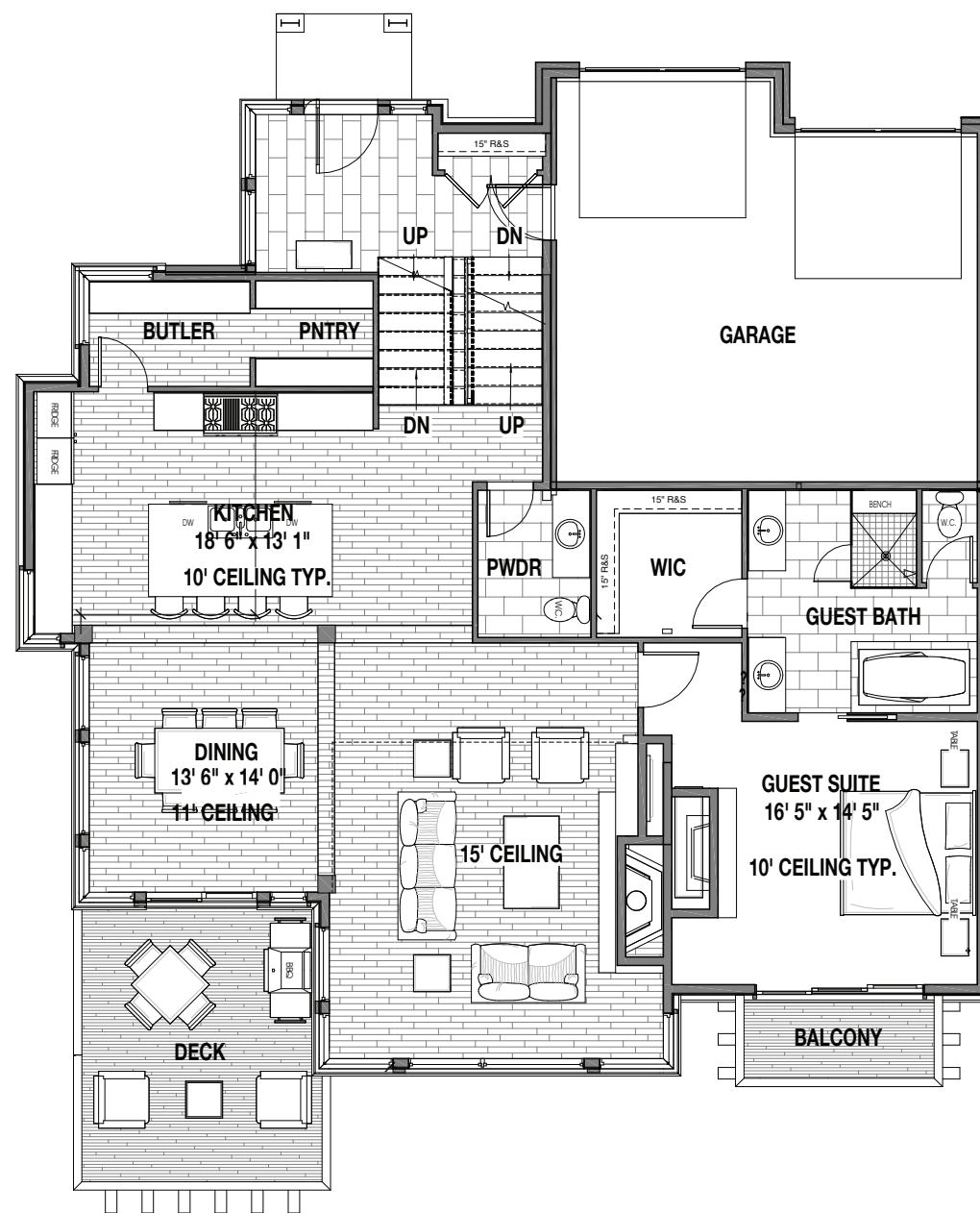


**LEVEL 0**

2,042 SQ FT | SCALE: 1/10" = 1'-0"

Scale only applies when printed on 11"x17" paper at 100%



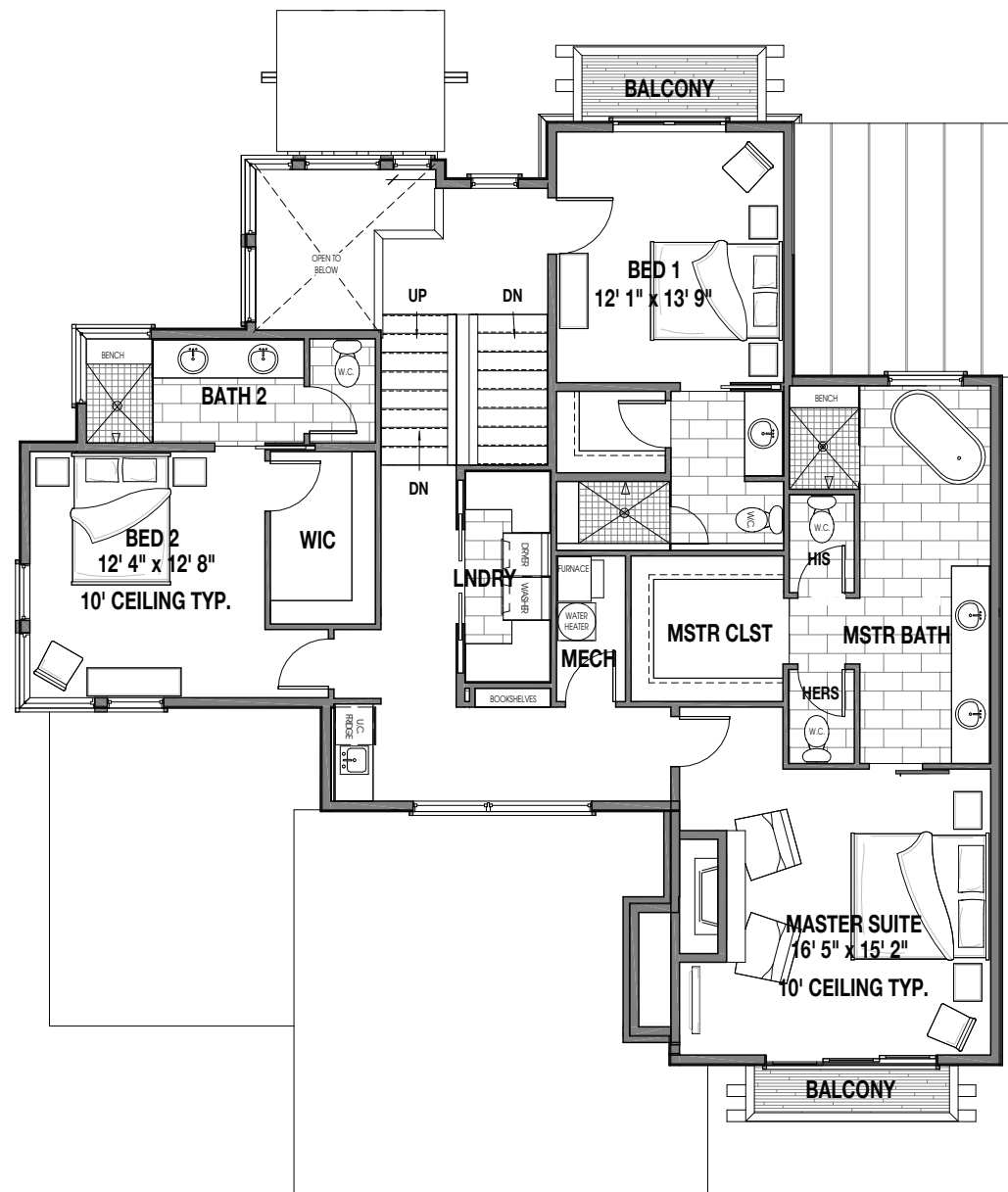


..... LEVEL 1 .....

1,838 SQ FT | SCALE: 1/10" = 1'-0"

Scale only applies when printed on 11"x17" paper at 100%





..... **LEVEL 2** .....

1,625 SQ FT | SCALE: 1/10" = 1'-0"

Scale only applies when printed on 11"x17" paper at 100%

