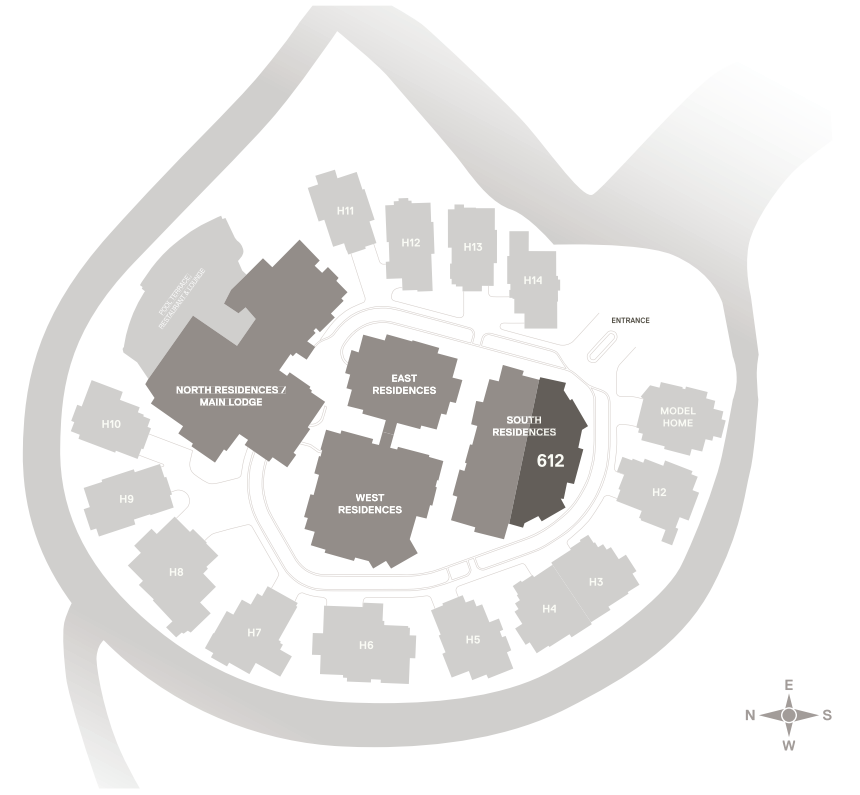


ESTADOS



RESIDENCE 612

3,921 SQ FT | LEVEL 6

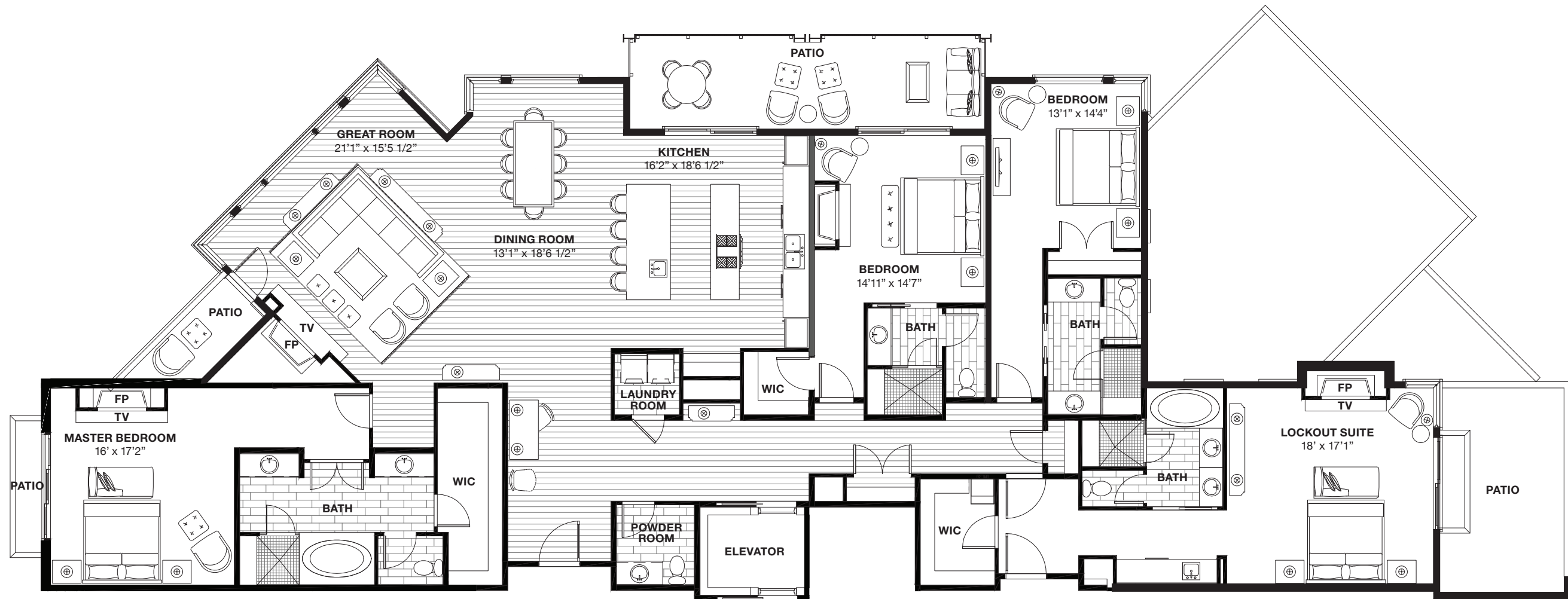


FEATURES

- 4 BEDROOMS
- 4 BATHROOMS
- 1 POWDER ROOM
- PRIVATE ELEVATOR
- CONTROLLED ACCESS
- HEATED PARKING

ARCHITECTURAL / INTERIOR HIGHLIGHTS

- Warm or Cool Finish Palettes
- Expansive Floor Plans with Spacious Entertaining Areas
- Floor to Ceiling Dual Glazed Low-E High Performance Windows
- Master Bedroom Suites with Steam Showers and Walk-In Closets
- Elegantly Appointed Bathrooms with Marble, Travertine, Limestone or Quartz Finishings
- Gourmet Kitchens with Sub-Zero and Wolf Appliances and Pantry
- Waterworks Fixtures Throughout
- Balconies with Custom Steel Railings
- Gas Burning Fireplaces
- Natural Stone and Reclaimed Wood Siding
- Laundry Room
- Central Heat and Air Conditioning



..... **LEVEL 6**

3,921 SQ FT | SCALE: 1/10" = 1'-0"

Scale only applies when printed on 11"x17" paper at 100%



BERKSHIRE HATHAWAY
HomeServices
Utah Properties



There is no guarantee that the facilities and amenities shown will be built, or if built, will be of the same type, size or nature as depicted. This advertising material is neither an offer to sell nor a solicitation to buy to residents in states in which registration requirements have not been fulfilled. The renderings and photographs shown are visualizations only and current design concepts, finishes, features and square footage is subject to change without notice. Some services and amenities may be provided at an additional charge.

