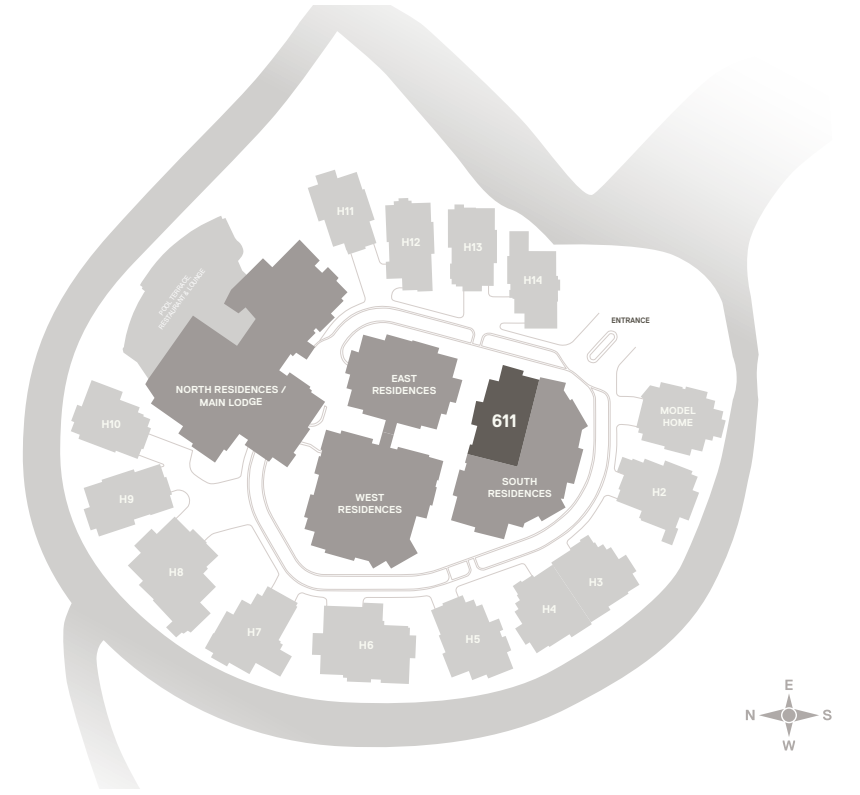


THE STUDIO SOS



RESIDENCE 611

2,836 SQ FT | LEVEL 6

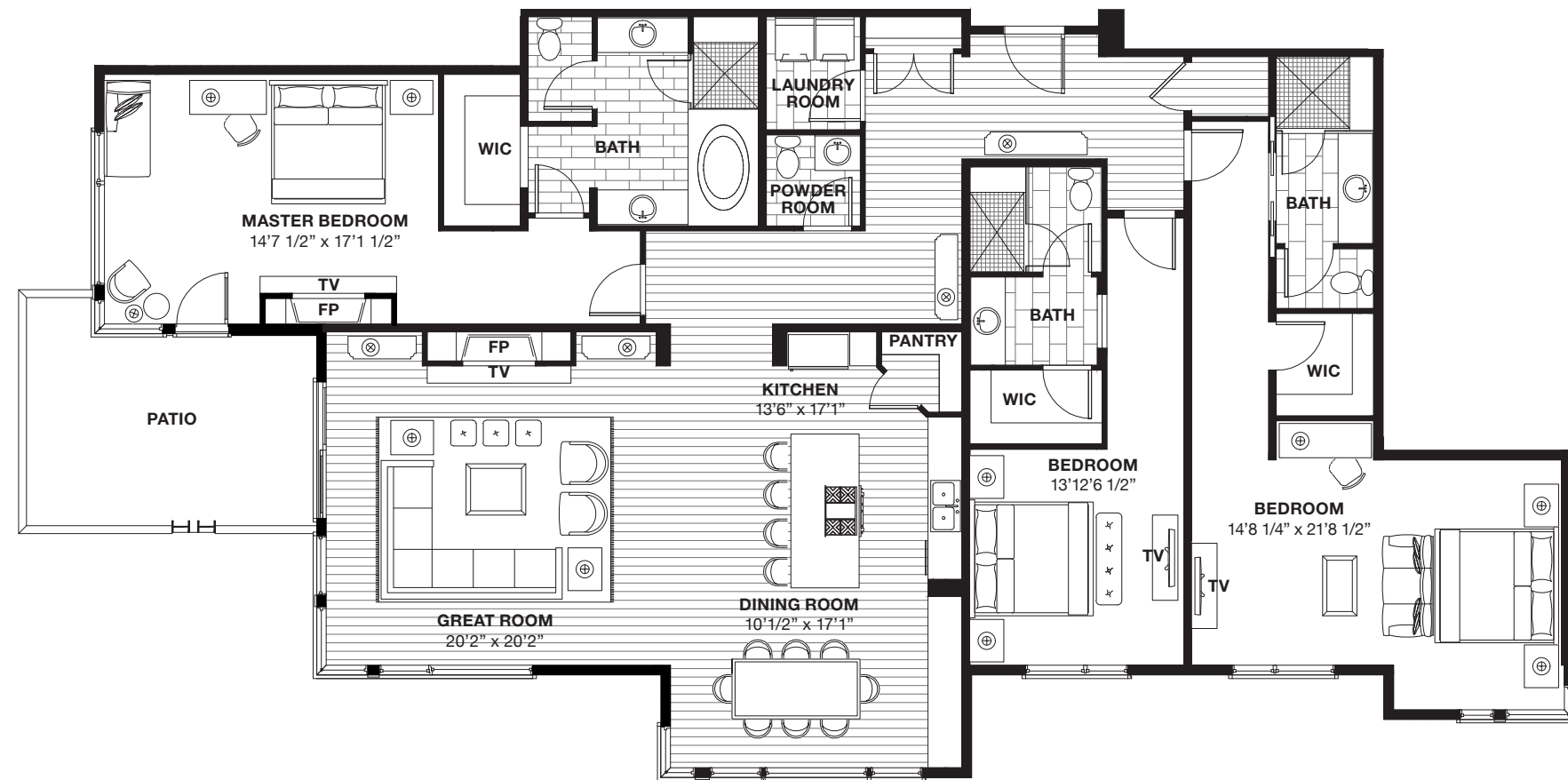


FEATURES

- 3 BEDROOMS
- 3 BATHROOMS
- 1 POWDER ROOM
- CONTROLLED ACCESS
- HEATED PARKING

ARCHITECTURAL / INTERIOR HIGHLIGHTS

- Warm or Cool Finish Palettes
- Expansive Floor Plans with Spacious Entertaining Areas
- Floor to Ceiling Dual Glazed Low-E High Performance Windows
- Master Bedroom Suites with Steam Showers and Walk-In Closets
- Elegantly Appointed Bathrooms with Marble, Travertine, Limestone or Quartz Finishings
- Gourmet Kitchens with Sub-Zero and Wolf Appliances and Pantry
- Waterworks Fixtures Throughout
- Balconies with Custom Steel Railings
- Gas Burning Fireplaces
- Natural Stone and Reclaimed Wood Siding
- Laundry Room
- Central Heat and Air Conditioning



..... **LEVEL 6**

2,836 SQ FT | SCALE: 1/10" = 1'-0"

Scale only applies when printed on 11"x17" paper at 100%

